

TrenchDrain

SURFACE DRAINAGE SYSTEM

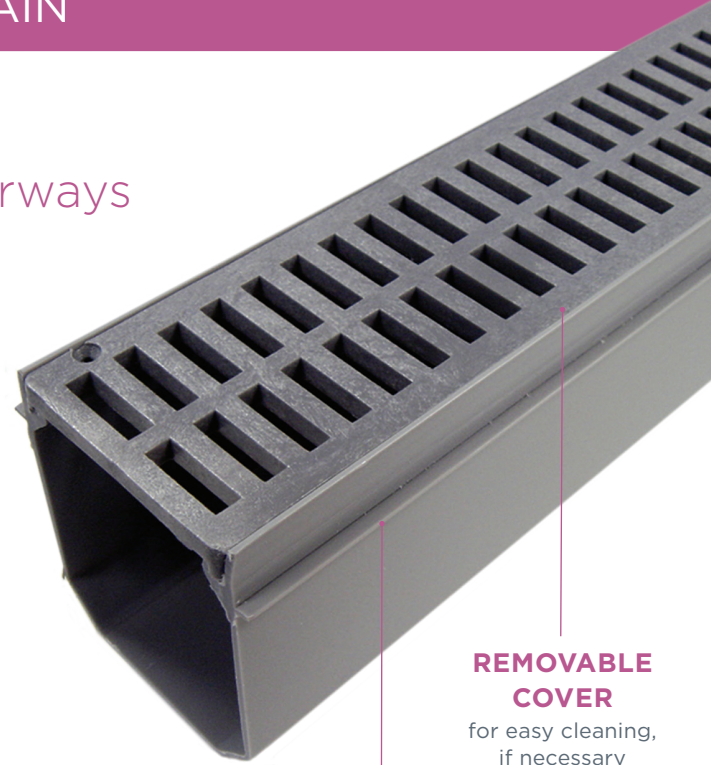
The **Trench***Drain* design prevents water from entering your house through doorways and stairways.

TRENCHDRAIN

Catches and drains water from doorways and stairways.

- TrenchDrain collects water and drains it to a perimeter drainage system/sump pump.
- Prevents water damage to your basement environment, keeping your home safe and dry.
- Over 200,000 TrenchDrain/WaterGuard systems have been installed across North America.

TrenchDrain is designed to connect to our WaterGuard® sub-floor drainage system.



**REMOVABLE
COVER**

for easy cleaning,
if necessary

FLANGES

anchor into new
concrete

Optional TrenchLock™ is a tray inserted into the trench drain with an airtight cup and floating ball design that lets water down but damp air cannot come up. Necessary for when a radon mitigation system is present.

TrenchDrain takes water to an interior perimeter drainage system such as WaterGuard (shown) and then to a sump pump system.

TrenchDrain can be installed in front of a garage door, or more commonly 3" inside of the door in cold climates to avoid freeze/thaw damage from ice.

