

# Model 288 Concentric Drive Stand Specifications when used with an Enerpac RR-308 Drive Cylinder

## Compatible Brackets<sup>(3)</sup>:

CP288B

## Drive Cylinder (CP288DC):

Stroke = 8.25"

Cylinder action = double

Bore = Ø2.88"

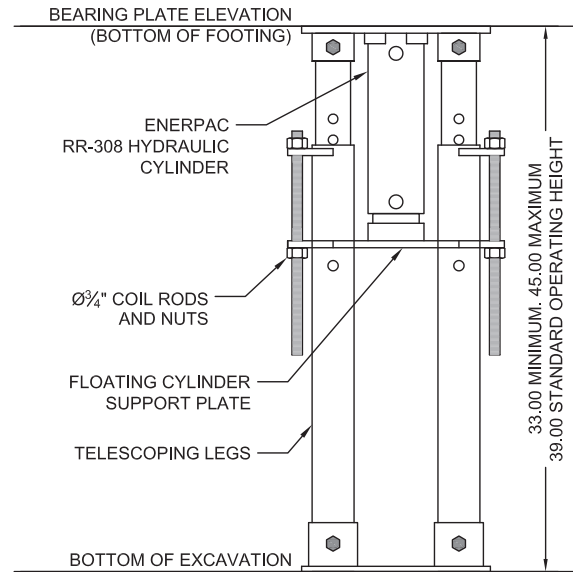
Hydraulic area = 6.51 in<sup>2</sup>

Max operating pressure<sup>(2)</sup> = 10,000<sup>(3)</sup> psi

## Drive Stand Hardware<sup>(1)</sup>:

(2) - Ø¾" x 20" long coil rod with nuts

Drive Stand Rated Drive Load <sup>(2)</sup> 60.0 kips			
Hydraulic Pressure (psi)	Drive Force <sup>(2)</sup> (kips)	Hydraulic Pressure (psi)	Drive Force <sup>(2)</sup> (kips)
400	2.6	5,200	33.9
800	5.2	5,600	36.5
1,200	7.8	6,000	39.1
1,600	10.4	6,400	41.7
2,000	13.0	6,800	44.3
2,400	15.6	7,200	46.9
2,800	18.2	7,600	49.5
3,200	20.8	8,000	52.1
3,600	23.4	8,400	54.7
4,000	26.0	8,800	57.3
4,400	28.6	9,200	59.9
4,800	31.2	9,220	60.0



- (1) Drive stand should never be operated without all hardware components firmly in place.
- (2) Do not operate at pressures that produce drive forces in excess of the drive stand's rated drive load.
- (3) Cylinder manufacturer's rating of load and pressure are maximum safe limits. Manufacturer encourages using only 80% of these ratings as good practice.